

Experimental Data - Point
Elemental ID and Quantification : Wide scan survey data

加湿器中のカルキ表面の分析 X線銃：400 μ m

Experiment 0124-2
RGB

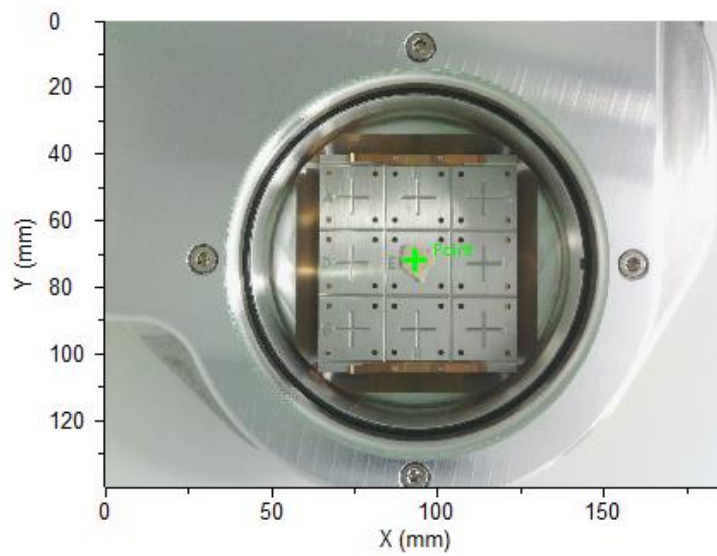


図1 試料の形状

Point
RGB

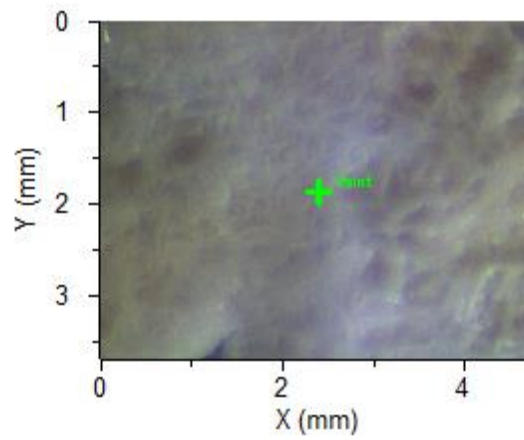


図2 試料表面拡大写真

Experimental Data - Point

Elemental ID and Quantification : Wide scan survey data

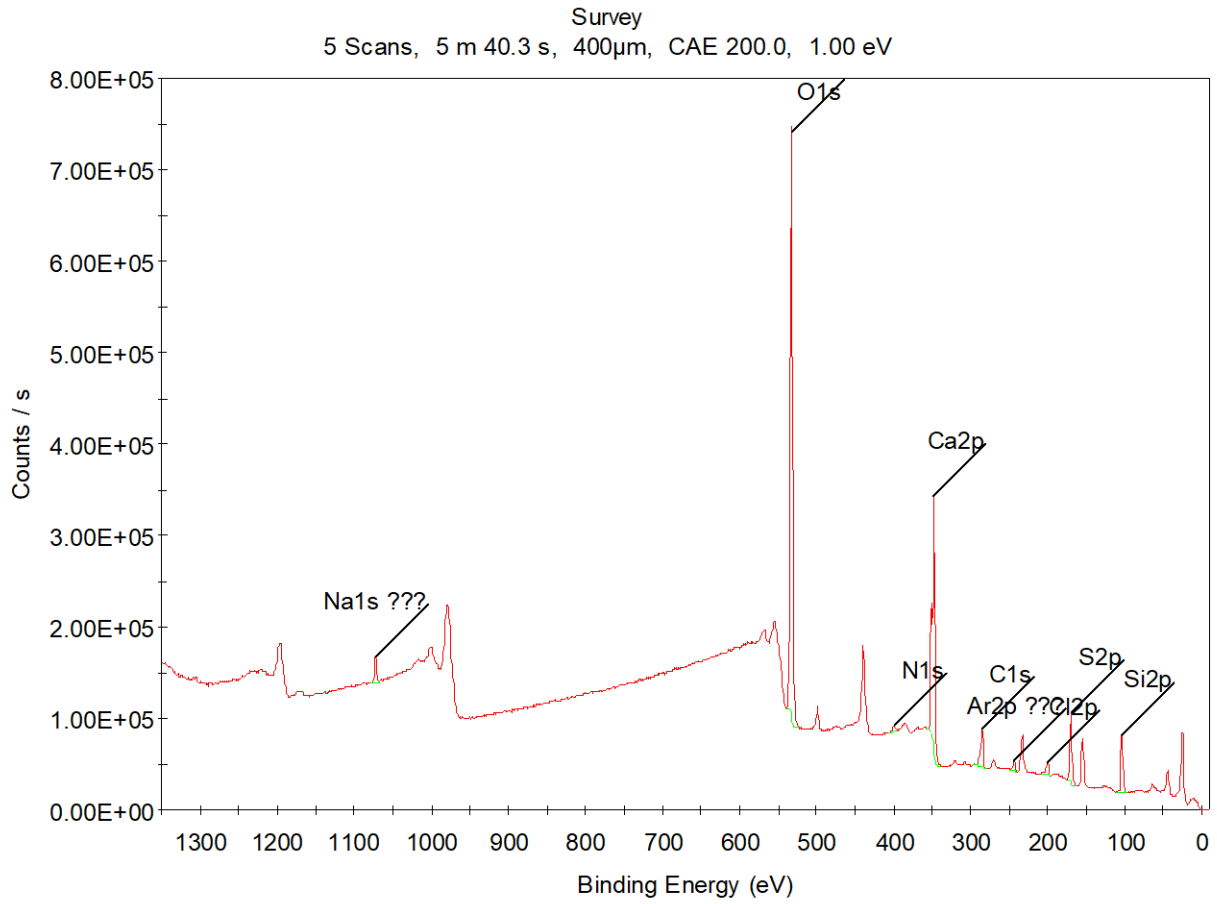


図3 サーベイスキャン結果

ワイドスキャン5回 約6分

Experimental Data - Point

Elemental ID and Quantification : Wide scan survey data

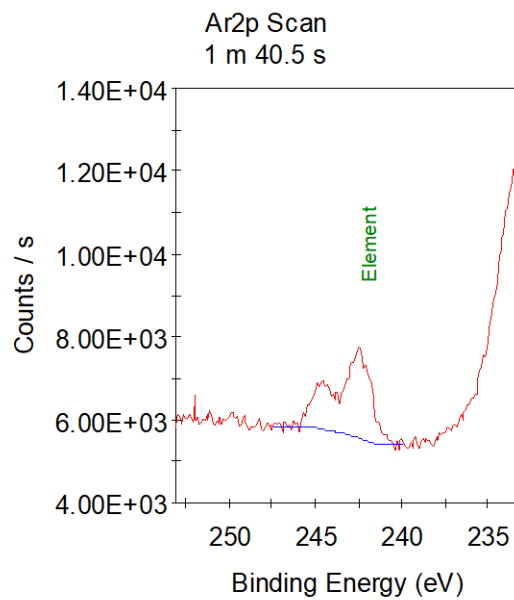
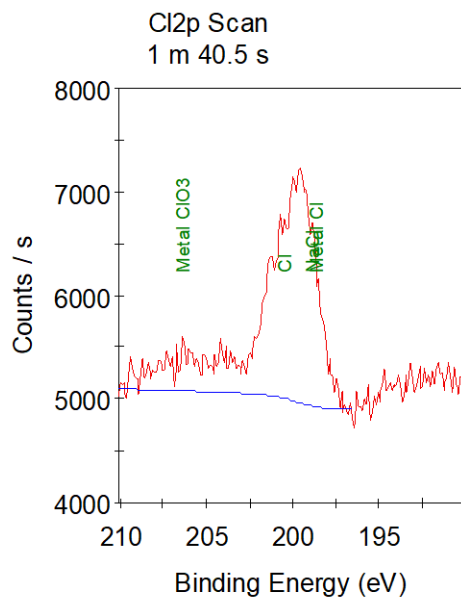
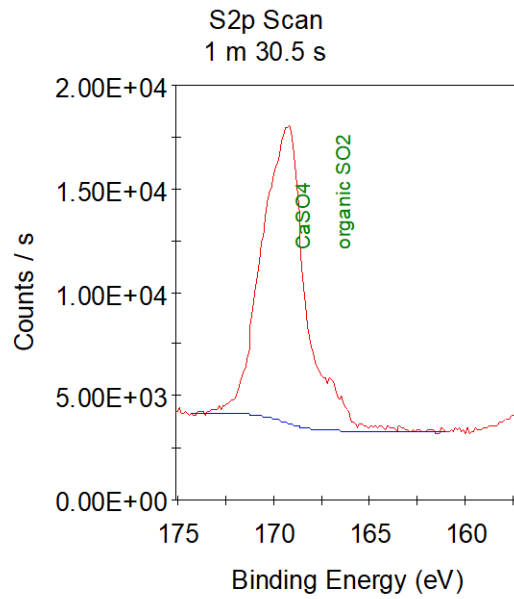
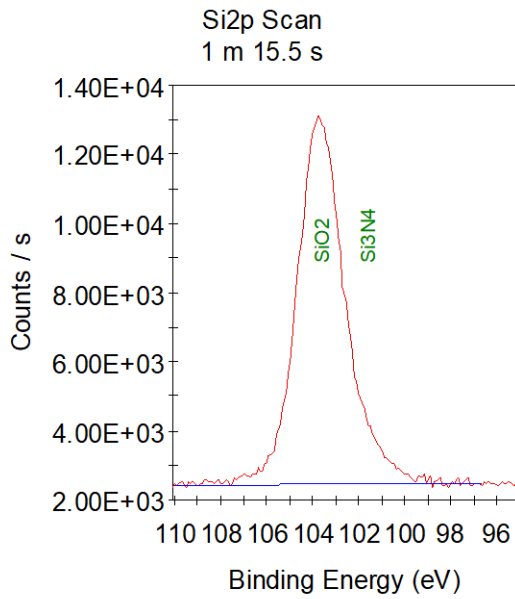
表 1 検出元素一覧

Elemental ID and Quantification

Name	Start BE	Peak BE	End BE	Height CPS	FWH MeV	Area (P) CPS.eV	Area (N)	Atomic %	Q	TXF N	Backg nd
O1s	539.5 8	532.3 8	523.0 8	640977 .75	3.62	2495121 .60	14480. 20	56.46	1	1.00	Smart
Ca2p	357.0 8	347.4 9	338.0 8	268755 .53	2.09	1284766 .29	3144.1 2	12.26	1	1.00	Smart
S2p	175.0 8	169.4 7	161.5 8	73424. 81	2.14	274487. 22	1906.5 9	7.43	1	1.00	Smart
Si2p	110.0 8	103.8 6	97.08	59813. 04	3.02	206287. 50	2883.7 0	11.24	1	1.00	Smart
C1s	297.5 8	285.2 2	278.0 8	39157. 76	3.13	161209. 96	2261.1 5	8.82	1	1.00	Smart
Na1s ? ??	1079. 08	1072. 88	1067. 58	27356. 37	3.08	94659.2 7	272.91	1.06	1	1.00	Smart
Cl2p	208.5 8	199.9 8	196.0 8	12678. 23	3.57	50175.8 9	243.52	0.95	1	1.00	Smart
Ar2p ? ??	248.0 8	243.1 9	239.5 8	9971.3 1	3.72	36567.7 5	142.64	0.56	1	1.00	Smart
N1s	406.0 8	399.7 2	394.0 8	8158.7 0	3.83	34412.7 0	310.94	1.21	1	1.00	Smart

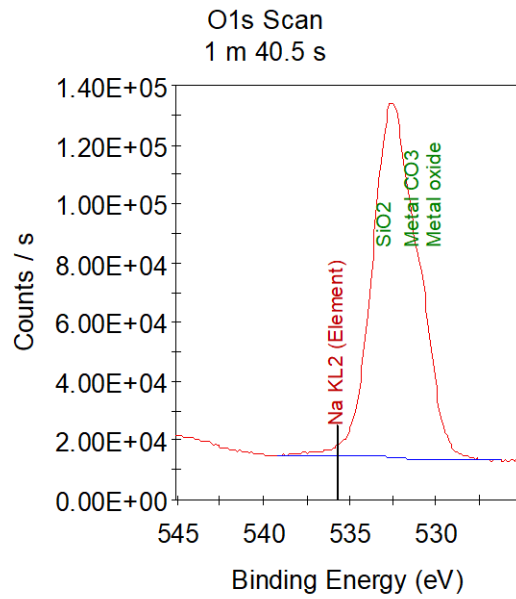
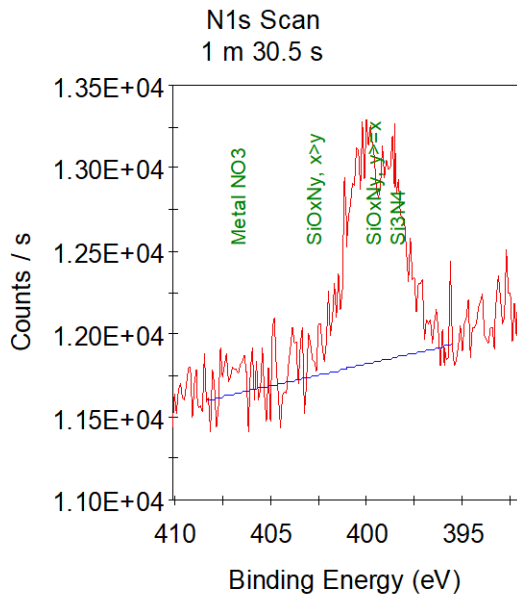
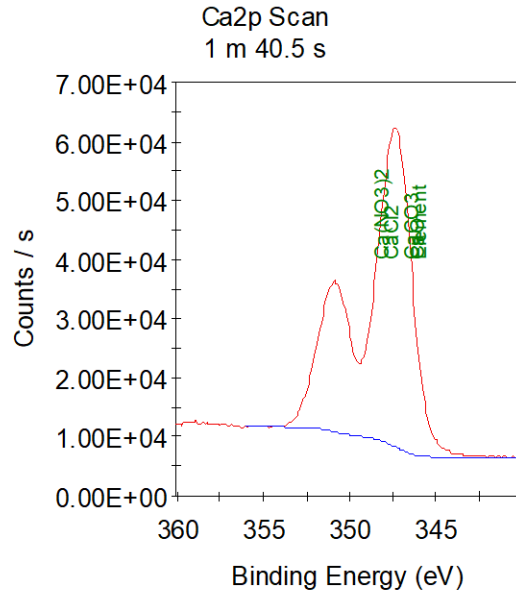
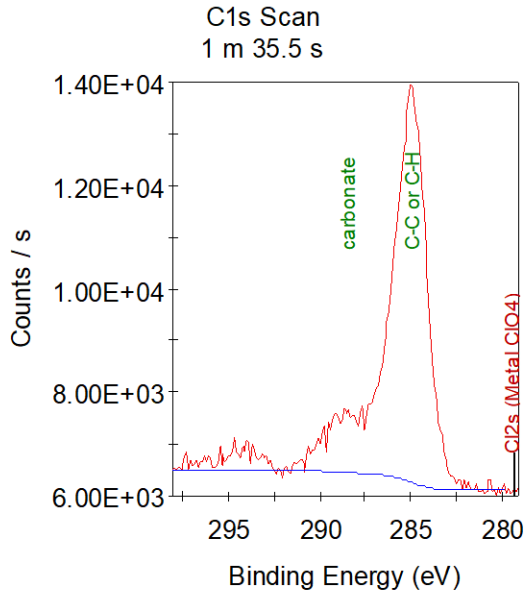
Experimental Data - Point
Chemical State Assessment : High Resolution Data

ナロースキャン結果 (パスエナジー50eV, エネルギーステップ0.1eV)



Chemical state labels appear at reference XPS peak energies

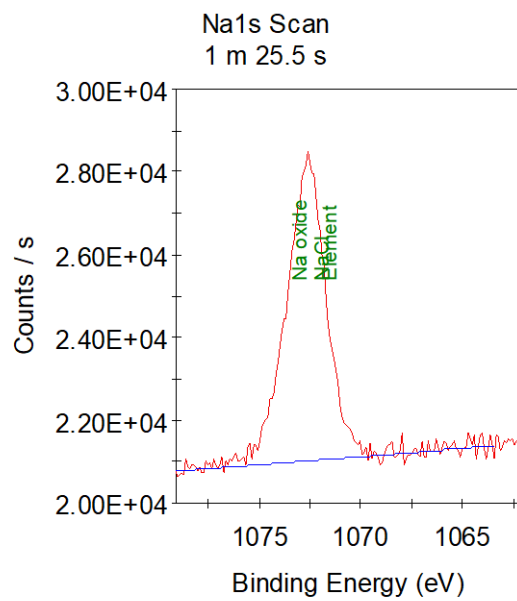
Experimental Data - Point
 Chemical State Assessment : High Resolution Data



Chemical state labels appear at reference XPS peak energies

Experimental Data - Point

Chemical State Assessment : High Resolution Data



ナロースキャン 各 10 回 1 回につき約 2 分

Chemical state labels appear at reference XPS peak energies

表 2 検出化合物候補一覧

Chemical Composition of Sample	Spectral Region	Details	
Si oxide	Si2p	SiO ₂	
	O1s	SiO ₂	
Ca carbonate	C1s	carbonate	
	Ca2p	CaCO ₃	
	O1s	Metal CO ₃	
Multiple Metal oxide (CaO, Na oxide)	Ca2p	CaO	
	O1s	Metal oxide	
	Na1s	Na oxide	Na < 2 At.%
carbon	C1s	C-C or C-H	
sulphate	S2p	CaSO ₄	
??? Ca chloride	Cl2p	Metal Cl	Cl < 2 At.%
	Ca2p	CaCl ₂	
??? Na chloride	Cl2p	NaCl	Cl < 2 At.%
	Na1s	NaCl	Na < 2 At.%
??? Ca nitrate	Ca2p	Ca(NO ₃) ₂	
	N1s	Metal NO ₃	N < 2 At.%
??? Si oxynitride	N1s	SiO _x N _y , x>y	N < 2 At.%
	N1s	SiO _x N _y , y>=x	N < 2 At.%
??? Si nitride	Si2p	Si ₃ N ₄	
	N1s	Si ₃ N ₄	N < 2 At.%
??? organic SO ₂	S2p	organic SO ₂	
??? organic Cl	Cl2p	Cl	Cl < 2 At.%
??? Elemental Ar	Ar2p	Element	Ar < 2 At.%
??? chlorite	Cl2p	Metal ClO ₃	Cl < 2 At.%
??? Elemental Ca	Ca2p	Element	
??? Elemental Na	Na1s	Element	Na < 2 At.%
??? = Lower confidence assignment			